



HOW do I log on?

HealthStream is an online learning system for YKHC's

- Annual Mandatory Orientation
- Regulatory Courses
- Patient Safety Courses
- CE/CME courses accredited by ANCC, ACPE, ASRT, AST, AARC, CCMC or ACCME



To log into HealthStream, open YKHC's Home Page:

YKHC News - Windows Internet Explorer

http://ykhcintranet.ykhc.org/

File Edit View Favorites Tools Help

YKHC News

INTRANET

Home Villages Departments Document Library **Links & Resources**

- Clinical Guidelines - YKHC
- Clinical Guidelines - ANMC
- Healthcare Plan and Benefits
- Health Science Information Service
- ANMC Provider Portal
- Micromedex
- Health Stream**
- See All Links & Resources

YKHC News

Napartel News May 8, 2009 5/7/2009

In this week's News: Employee update forum (link to the presentations), Salary Survey, Well Child recognition, Tech tip...

Search Directory

Search

Browse by Name:
A B C D E F G H I J K L M N
O P Q R S T U V W X Y Z

[Browse by Department](#)
[Browse by Location](#)

MESSANGER WEATHER MAPS

Messenger Newsletter

This month's newsletter, along with the complete newsletter archive, can be found on the [YKHC website](#).

Welcome to HealthStream - Windows Internet Explorer provided by YKHC

https://login.healthstream.com/HSTMSTS/login.aspx?ReturnUrl=%2FHSTMSTS%2Fusers%2Fissue.aspx%3Fwa%3Dwsignin1.0%26wtralm%3Dh

AFHCAN Telemedicine CCM User Login Health Stream Kronos Self-Service Lippincott's Nursing Proc... Mammos PeopleSoft Suggested Sites The OB Department

Welcome to HealthStream

Sign In

User ID

Password

Login

[YKHC Home Page](#)
Login Instructions
To login, enter your employee number in the User ID field and "begin" in the Password field.

[Password reminder](#) [Forgot your password?](#)

If you are experiencing problems logging into the system call 543-6060 or 543-6070.

If you have forgotten your password you can click "Forgot your password?" You will be sent to a new link. Follow the instructions to reset your password. You will be asked for your User ID (Emp # or corporate email).

Copyright © 2013 All Rights Reserved.
Build 13.01.28.895.1
O:STS2 S:170.173.0.22

To begin your courses:

1. Select the My Learning tab

The screenshot shows the 'My Learning' dashboard. At the top, there are navigation tabs: 'My Learning', 'My Transcript', 'Catalog', 'HospitalDirect®', and 'My Profile'. Below these, there are three main sections: 'Assigned Learning', 'Elective Learning', and 'Upcoming Classes'. The 'Assigned Learning' section contains a table with two rows of course information. The 'Elective Learning' section is currently empty. The 'Upcoming Classes' section is also empty. A 'Site Map' and 'Help' link are in the top right corner. A 'Return To Top of Page' link is at the bottom right. A browser status bar at the bottom shows 'Internet' and '100%' zoom.

3. Click on the course you would like to take

2. If you are searching for additional courses, click on the Catalog tab

Name	Due Date*	Status
Rapid Regulatory Compliance: Non-clinical I:Corporate Compliance, Sexual Harassment, Patient Rights, Confidentiality, HIPAA, Grievances	06/30/2009	Assigned
Rapid Regulatory Compliance: Non-clinical II:General Safety, Fire Safety, Electrical Safety, Ergonomics, Back Safety,Hazard Communication, Security & Workplace Violence, Reporting Incidents, Emergency Preparedness, Infection Control	06/30/2009	Assigned

*All assignments are due at midnight, Eastern Time.

Name	Enrolled By	Status
------	-------------	--------

Once the Course Details are opened, you may view the Course Overview, or begin the Learning Activity.

The screenshot shows the 'Course Details' page for 'Rapid Regulatory Compliance: Non-clinical I:Corporate Compliance, Sexual Harassment, Patient Rights, Confidentiality, HIPAA, Grievances'. The page includes a 'Course Overview' link and an 'Exit Course' button. Below this, there is a 'Course Learning Activities' section with a table of activities. At the bottom, there is a 'Continuing Education Credit Information' section. A 'Site Map' and 'Help' link are in the top right corner. A browser status bar at the bottom shows 'Internet' and '100%' zoom.

Course Details
Rapid Regulatory Compliance: Non-clinical I:Corporate Compliance, Sexual Harassment, Patient Rights, Confidentiality, HIPAA, Grievances
 Estimated Course Length: 22 minutes

[Course Overview](#)
[Exit Course](#)

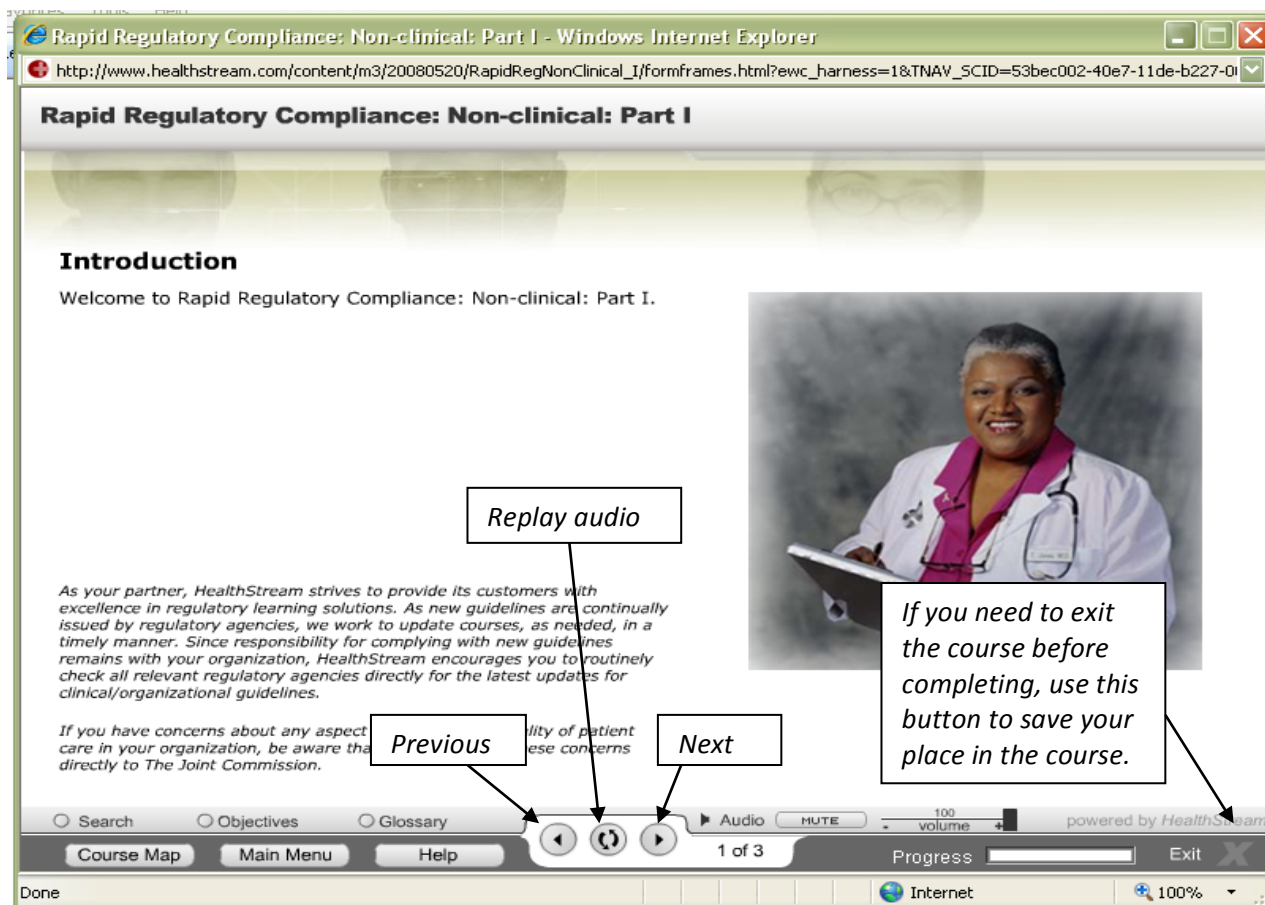
Course Learning Activities

You are enrolled in this course. Click the "Course Overview" link above to review the course description, learning objectives, and all available CE credit prior to beginning the learning activities below. (For CE Credit Information, scroll down.)

Learning Activity	Status	Score	Last Accessed
Rapid Regulatory Compliance: Non-clinical: Part I*	Not Yet Started		
Exam*	Not Yet Started		

Continuing Education Credit Information

The list below shows the CE credit for which you qualify, based upon your professional license information in the system. If there is another credit listed on the Course Overview screen for which you qualify, update your professional license information by clicking the "Maintain Disciplines and Licenses" link below (if available) or by contacting your administrator.



Don't forget to take the Exam to complete the course. You will not be able to access the Exam hyperlink until you have finished the course. Some Continuing Education courses also require an Evaluation to complete a course.

If you have any problems, please call one of the following numbers:

Jennifer Nixon, Ext 6062

Norman Michaels, Ext. 6983

Lauri O'Brien, Ext. 6981

Enjoy your Courses!